

Springwell Solar Farm

ES Volume 2: Figures

Chapter 13: Population

APFP Regulation 5(2)(a)

Planning Act 2008

Infrastructure Planning
(Applications: Prescribed Forms
and Procedure) Regulations 2009

EN010149/APP/6.2

November 2024

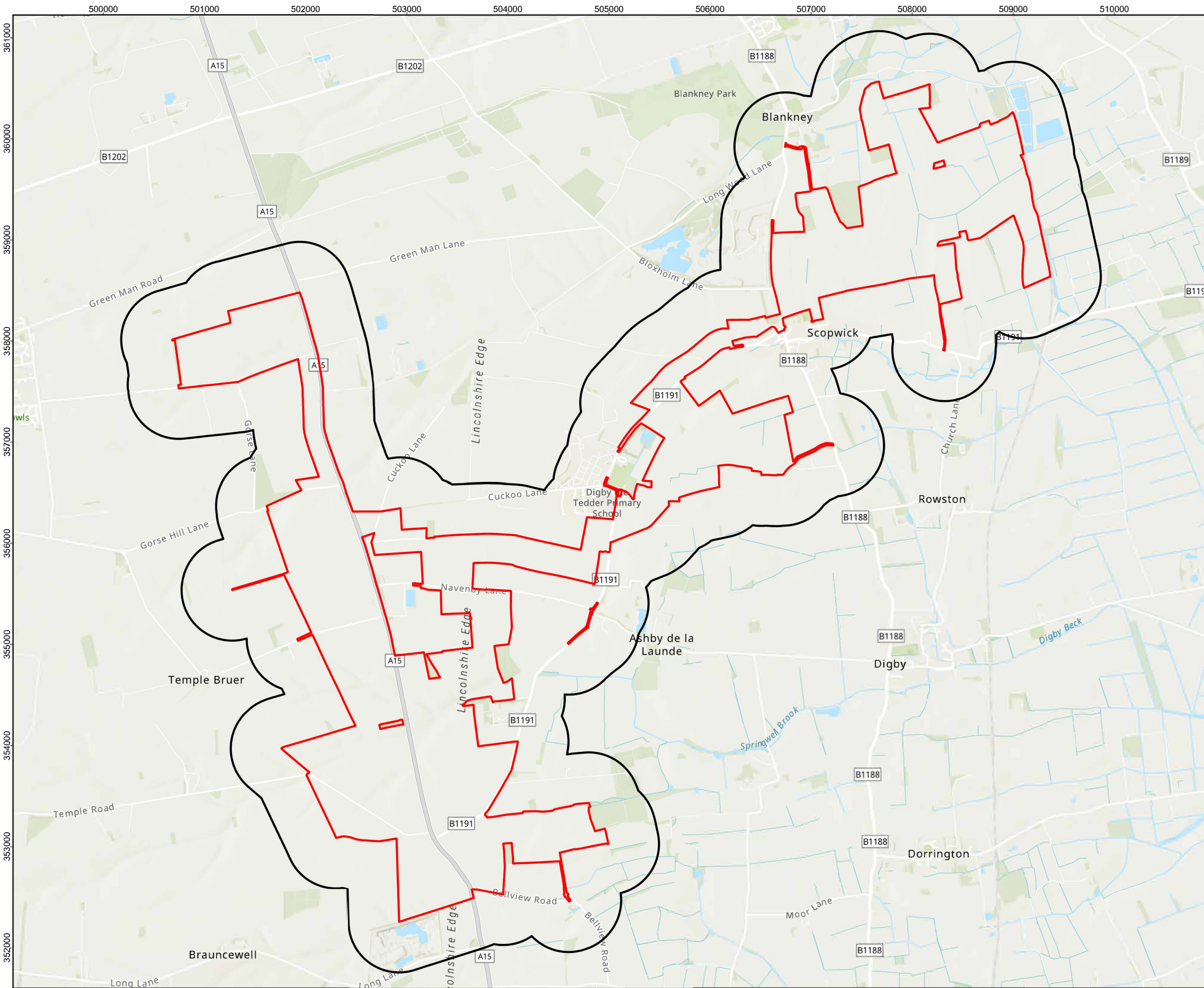
Springwell Energyfarm Ltd



ES Volume 2: Figures

Chapter 13: Population

Drawing number	Revision number	Drawing title	Scale
Figure 13.1	01	Population Study Area	A3
Figure 13.2	01	Population Occupancy Rates Study Area	A3
Figure 13.3	01	Construction Labour Market Areas	A3
Figure 13.4	01	English Indices of Multiple Deprivation (2019)	A3
Figure 13.5	01	English Indices of Multiple Deprivation (2019) – Education, Skills, and Training Domain	A3



- LEGEND:**
- Order Limits
 - Order Limits 500m Buffer

NOTES:
 Coordinate System: British National Grid
 Projection: Transverse Mercator
 Datum: OSGB 1936
 Units: Meter



Rev	Date	Description	Drn	Chk	App
01	Nov 2024	DCO Submission	RSK	RSK	EDF

Springwell Solar Farm



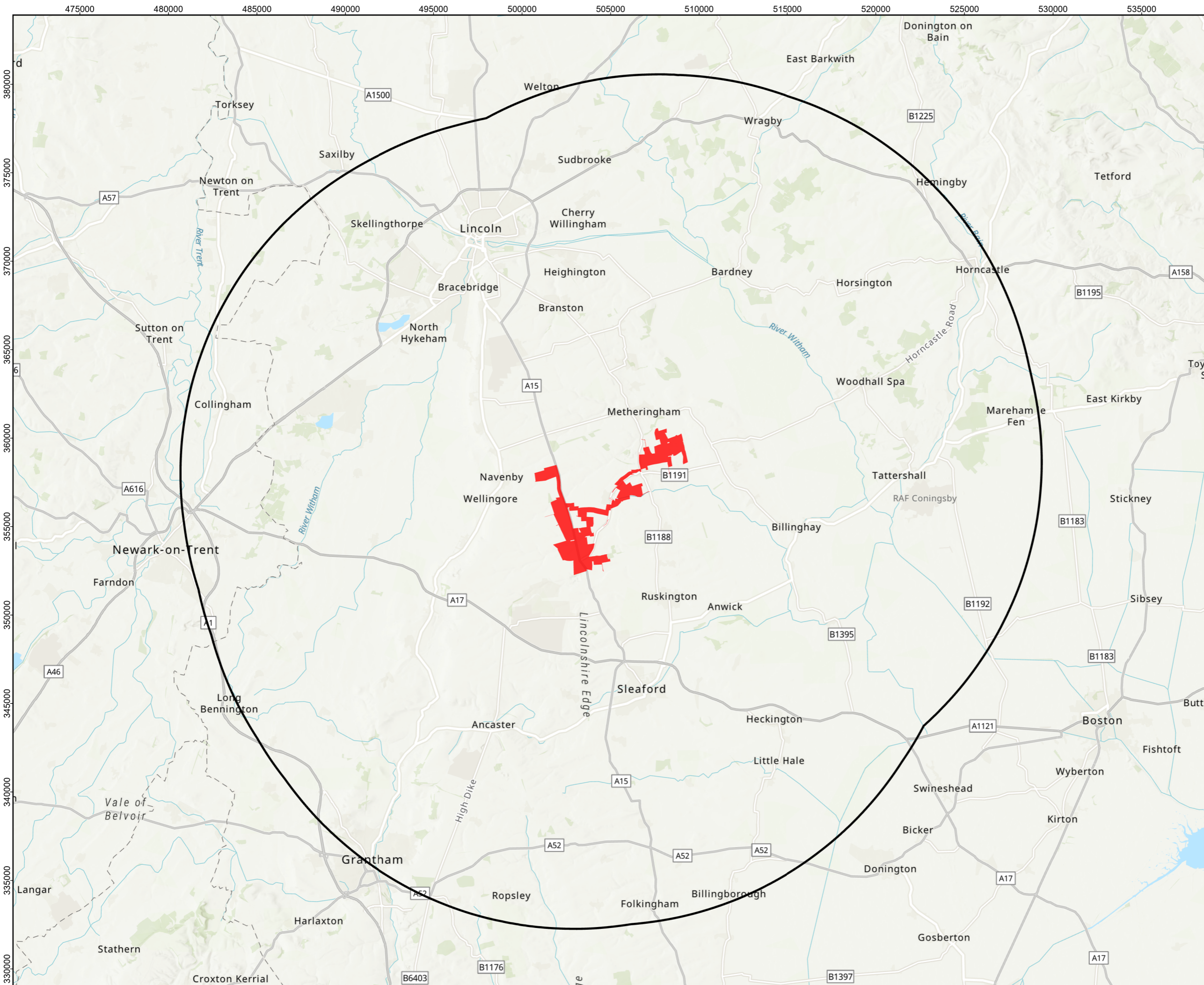
DOCUMENT: ENVIRONMENTAL STATEMENT
 VOLUME 2: FIGURES
 REGULATION 5(2)(a)

TITLE:
 FIGURE 13.1: POPULATION STUDY
 AREA

PINS REFERENCE NUMBER:
 EN010149/APP/6.2

Scale: 1:35,000 @ A3

REV 01



- LEGEND:**
- Order Limits
 - Order Limits 20km Buffer

NOTES:

Coordinate System: British National Grid
 Projection: Transverse Mercator
 Datum: OSGB 1936
 Units: Meter



Rev	Date	Description	Drn	Chk	App
01	Nov 2024	DCO Submission	RSK	RSK	EDF

Springwell Solar Farm



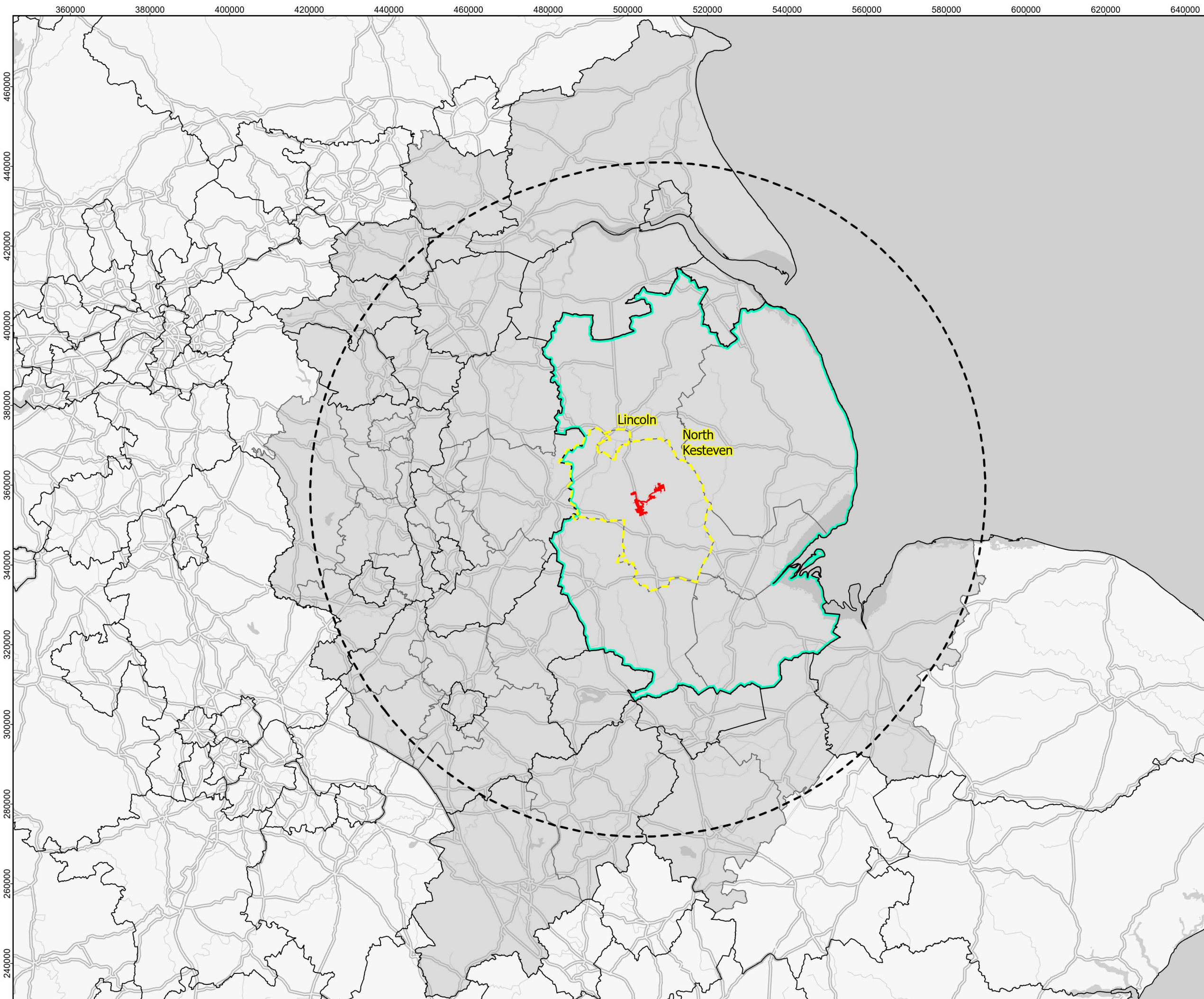
DOCUMENT: ENVIRONMENTAL STATEMENT
 VOLUME 2: FIGURES
 REGULATION 5(2)(a)

TITLE:
 FIGURE 13.2: POPULATION
 OCCUPANCY RATES STUDY AREA

PINS REFERENCE NUMBER:
 EN010149/APP/6.2

Scale: 1:200,000 @ A3

REV 01



- LEGEND:**
- Order Limits
 - Order Limits 50 mile buffer
 - CLMA Focus Area
 - Lincolnshire
 - CLMA
 - County Boundaries

NOTES:

Coordinate System: British National Grid
 Projection: Transverse Mercator
 Datum: OSGB 1936
 Units: Meter



Rev	Date	Description	Drn	Chk	App
01	Nov 2024	DCO Submission	RSK	RSK	EDF

Springwell Solar Farm

DOCUMENT: ENVIRONMENTAL STATEMENT
 VOLUME 2: FIGURES
 REGULATION 5(2)(a)

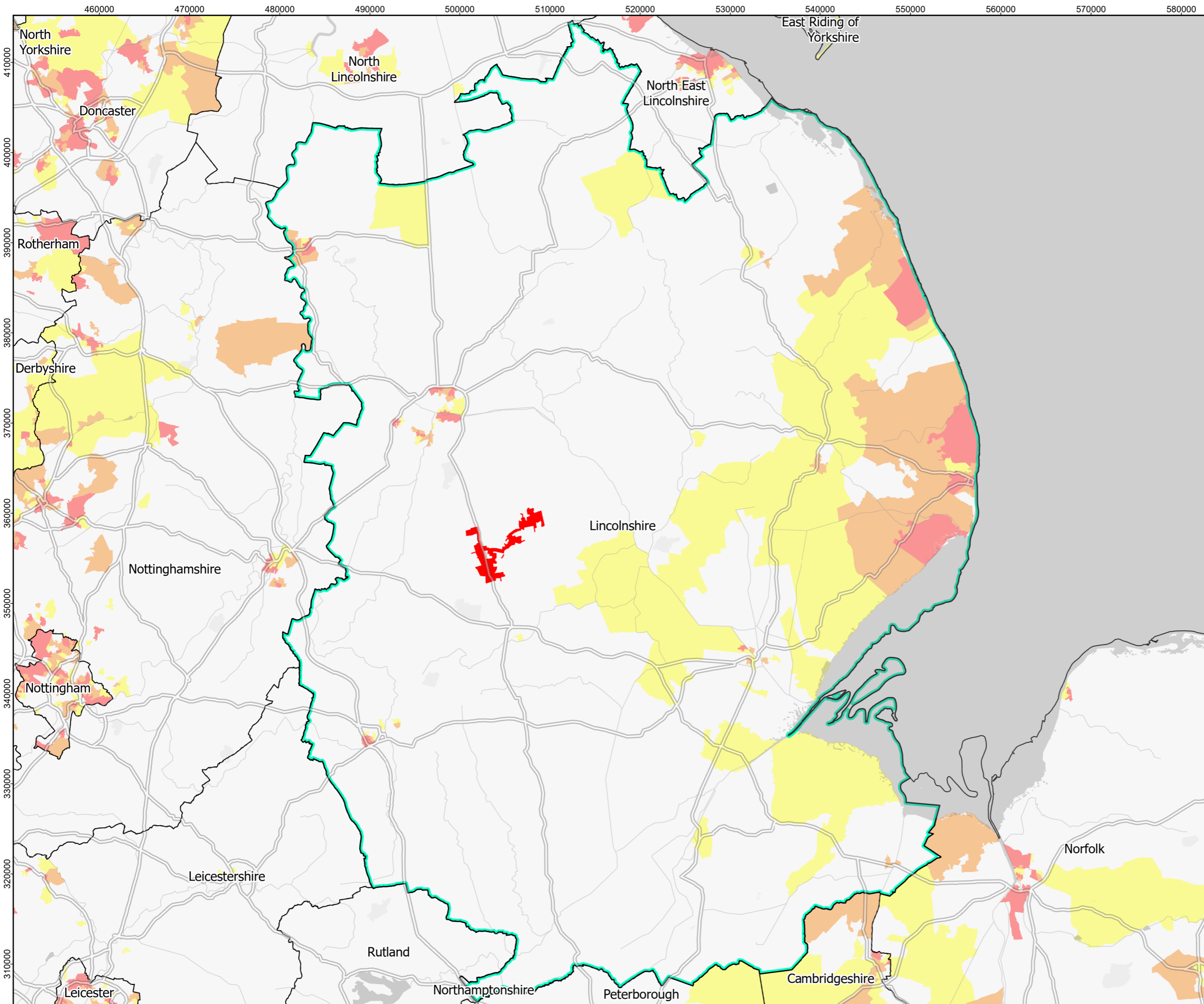
TITLE:
 FIGURE 13.3: CONSTRUCTION
 LABOUR MARKET AREAS

PINS REFERENCE NUMBER:
 EN010149/APP/6.2

Kilometers

Scale: 1:900,000 @ A3

REV 01



- LEGEND:**
- Order Limits
 - Lincolnshire
 - County Boundaries
- IMD (2019)**
- 10% most deprived
 - 20% most deprived
 - 30% most deprived

NOTES:

Coordinate System: British National Grid
 Projection: Transverse Mercator
 Datum: OSGB 1936
 Units: Meter



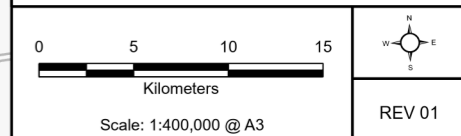
Rev	Date	Description	Drn	Chk	App
01	Nov 2024	DCO Submission	RSK	RSK	EDF

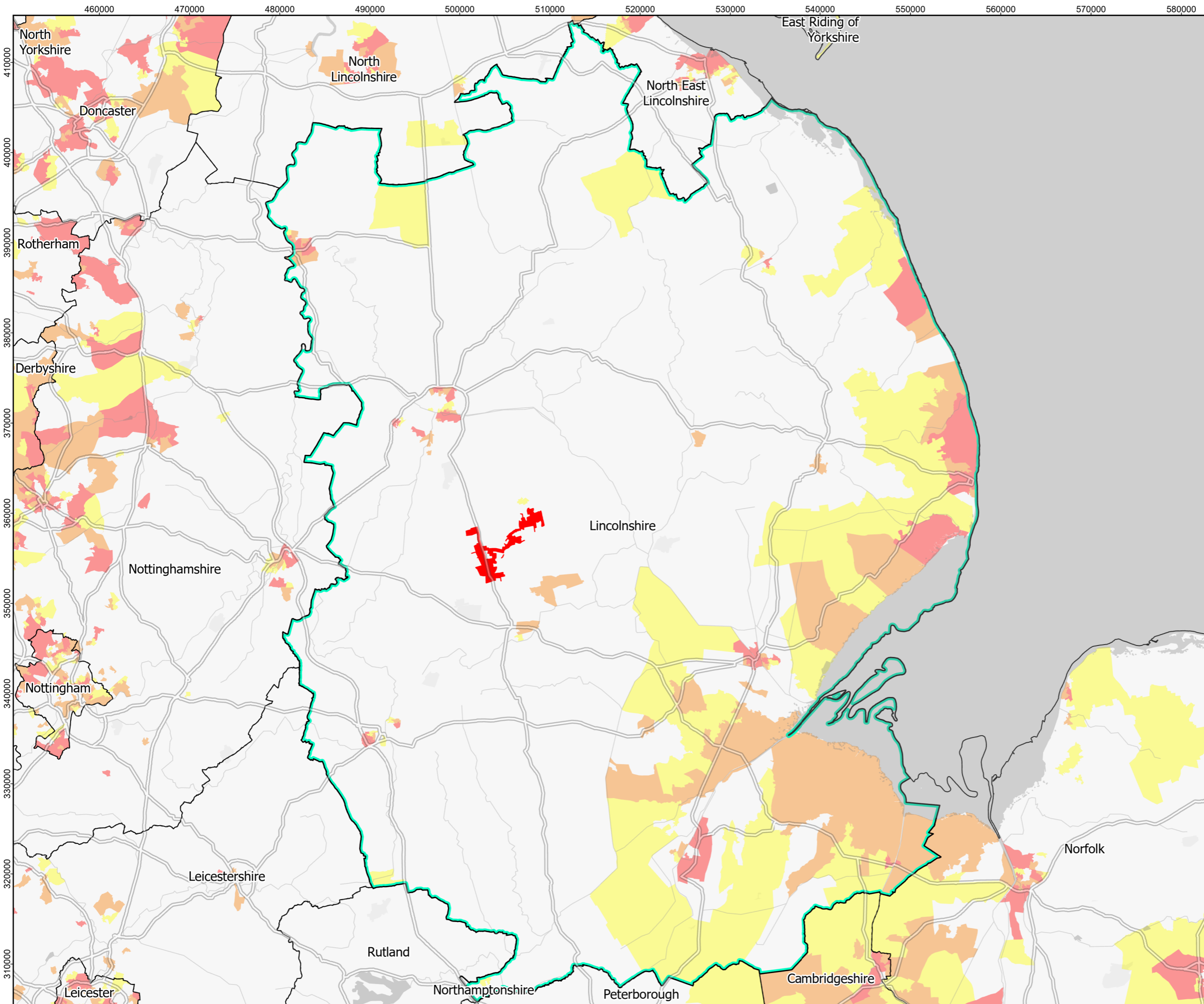
Springwell Solar Farm

DOCUMENT: ENVIRONMENTAL STATEMENT
 VOLUME 2: FIGURES
 REGULATION 5(2)(a)

TITLE:
 FIGURE 13.4: ENGLISH INDICES OF
 MULTIPLE DEPRIVATION (2019)

PINS REFERENCE NUMBER:
 EN010149/APP/6.2





LEGEND:

- Order Limits
- Lincolnshire
- County Boundaries

IMD (2019) - Education, Skills and Training Domain

- 10% most deprived
- 20% most deprived
- 30% most deprived

NOTES:

Coordinate System: British National Grid
 Projection: Transverse Mercator
 Datum: OSGB 1936
 Units: Meter



Rev	Date	Description	Drn	Chk	App
01	Nov 2024	DCO Submission	RSK	RSK	EDF

Springwell Solar Farm

DOCUMENT: ENVIRONMENTAL STATEMENT
 VOLUME 2: FIGURES
 REGULATION 5(2)(a)

TITLE:
 FIGURE 13.5: ENGLISH INDICES OF
 MULTIPLE DEPRIVATION (2019) —
 Education, Skills, and Training Domain

PINS REFERENCE NUMBER:
 EN010149/APP/6.2

Scale: 1:400,000 @ A3

REV 01

